

Brummel Land Company

Farm and Commercial Real Estate
9947 E 1600 North Rd • Pontiac, Illinois
815-674-3006

Ottawa Farm

Wallace Township

LaSalle County, IL

\$17,900/acre or \$1,432,000

Size

80 acres +/-

PIN #'s / Legal Description / Acres / Tax amount

Parcel ID 13-27-200-000 - LEGAL N1/2 NE1/4 SEC 27-34-3 / 80 acres / Tax = \$4,958

Location

The farms are located about 1 miles Northwest of Ottawa IL.

Improvements

There are no improvements on the farms. The old government bins were removed, and the farm was pattern tiled.

Taxes

Total Property Tax = \$62/acre

Soils

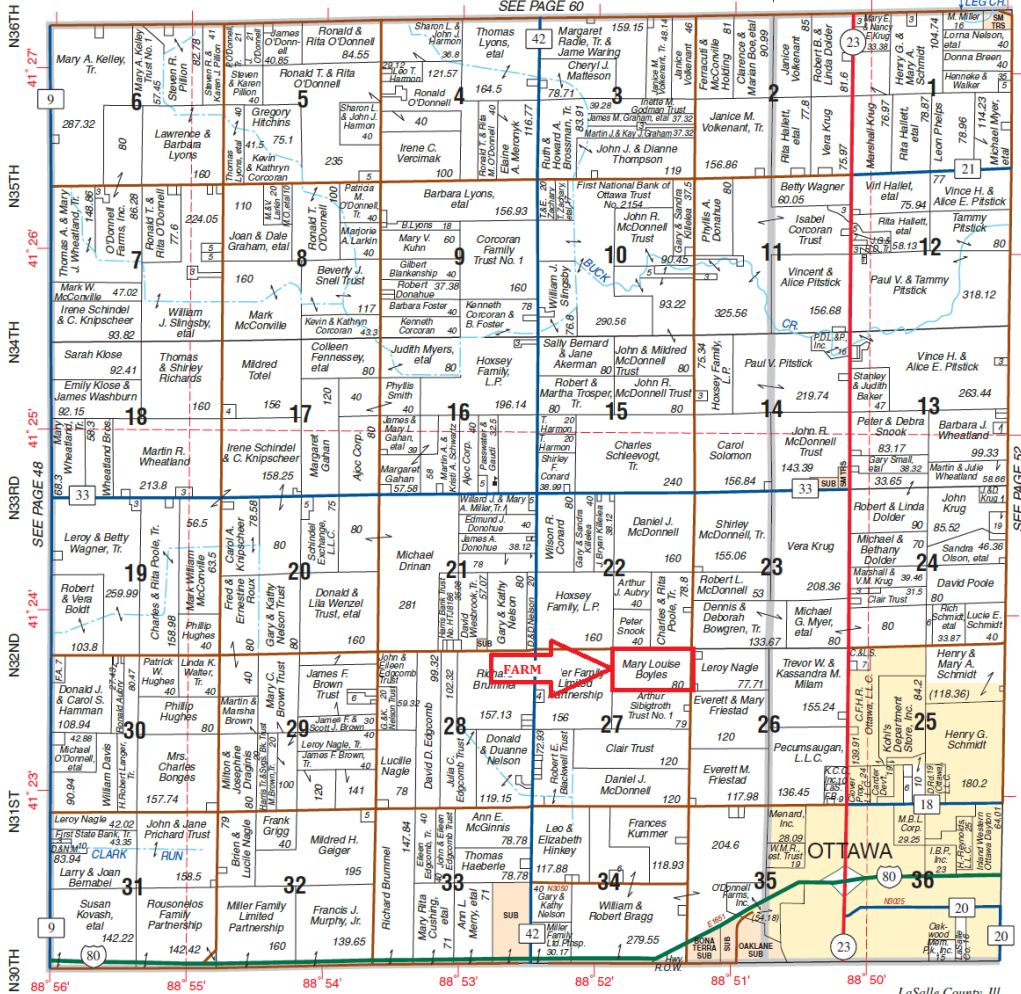
This farm has a 141.7 PI, and is predominantly Drummer and Elburn soils

WALLACE WEST PART DAYTON

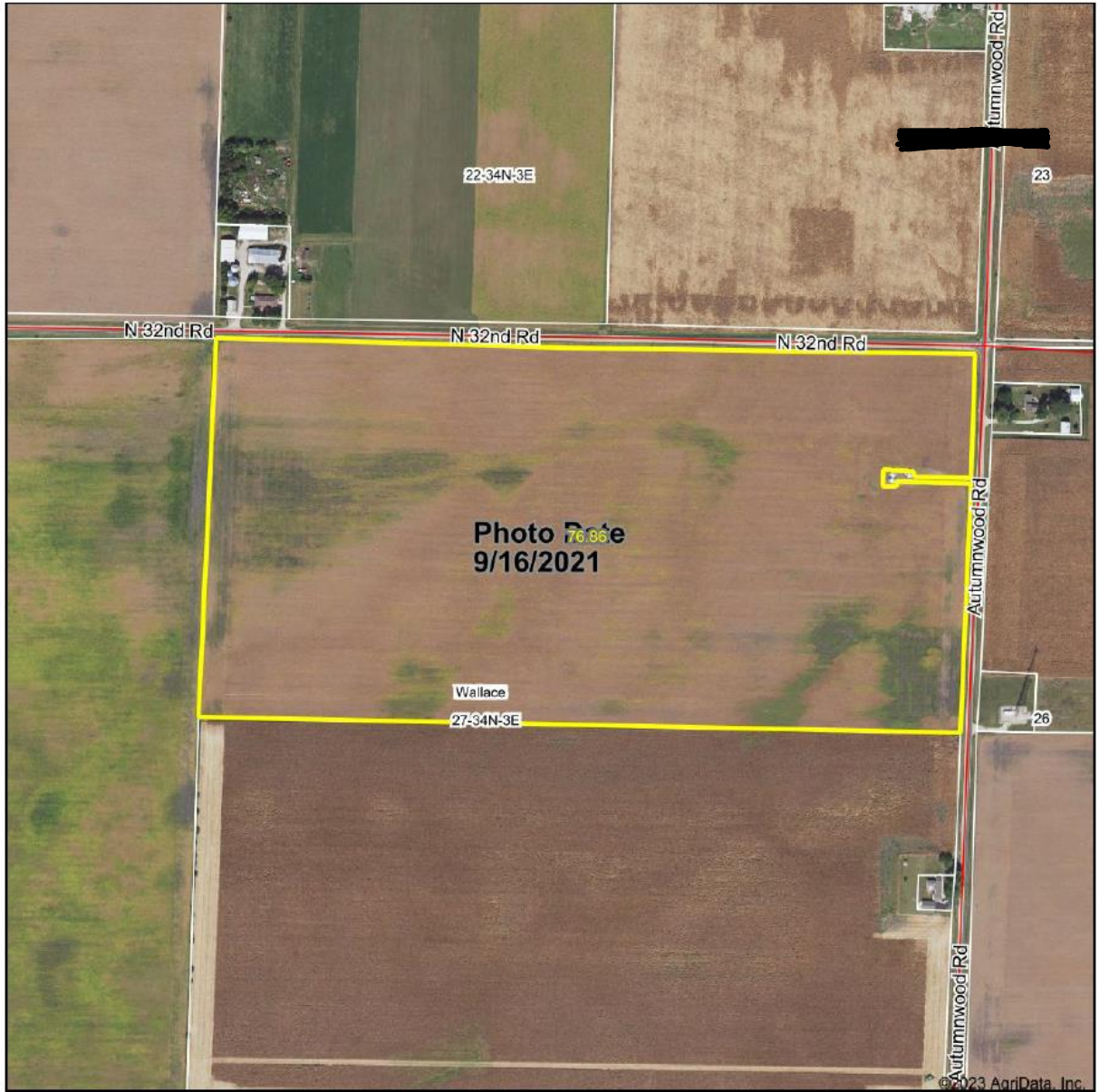
T.34N.-R.3E.

WALLACE TWP. ← DAYTON TWP.

CROOKED LEG CR.



Aerial Map



Brummett
LAND COMPANY
www.brmmet.com
mobile 815 674 3050
mbrummet@yahoo.com
Mark Brummett, Illinois broker
FARM, RANCH AND COMMERCIAL REAL ESTATE

Maps Provided by
surety
CUSTOMIZED ONLINE MAPPING
© AgriData, Inc. 2021 www.AgriDataInc.com

Map Center: 41° 23' 42.79, -88° 51' 37.1

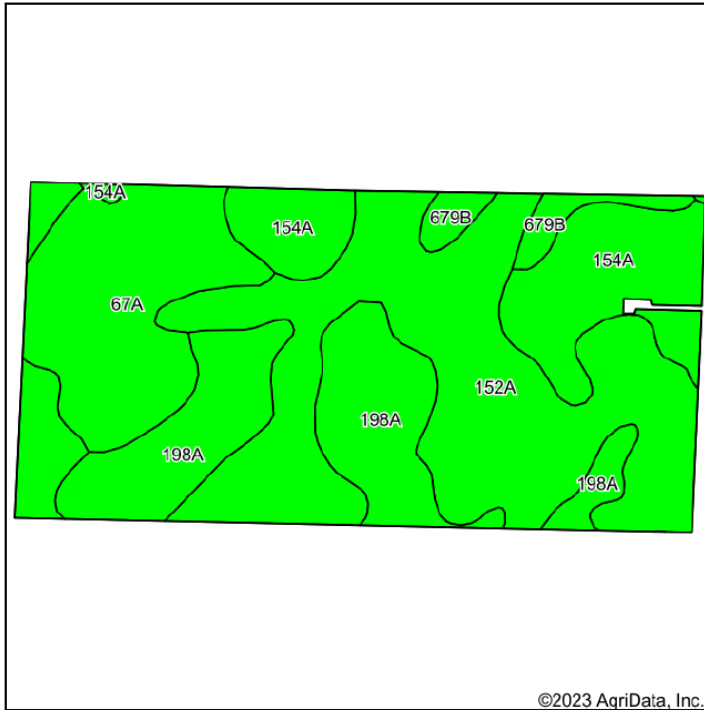
0ft 530ft 1060ft

27-34N-3E
LaSalle County
Illinois

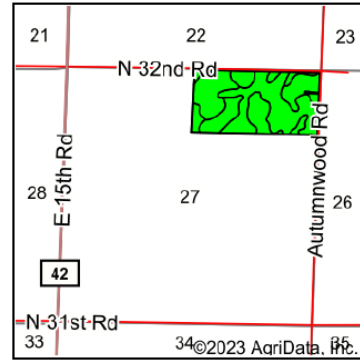


Field borders provided by Farm Service Agency as of 5/21/2008

Soils Map



Soils data provided by USDA and NRCS.



State: **Illinois**
 County: **LaSalle**
 Location: **27-34N-3E**
 Township: **Wallace**
 Acres: **76.86**
 Date: **1/23/2023**



Maps Provided By



Area Symbol: IL099, Soil Area Version: 18

Code	Soil Description	Acres	Percent of field	Il. State Productivity Index Legend	Subsoil rooting ^a	Corn Bu/A	Soybeans Bu/A	Wheat Bu/A	Oats Bu/A ^b	Crop productivity index for optimum management
152A	Drummer silty clay loam, 0 to 2 percent slopes	33.45	43.5%		FAV	195	63	73	100	144
198A	Elburn silt loam, 0 to 2 percent slopes	15.39	20.0%		FAV	197	61	74	94	143
67A	Harpster silty clay loam, 0 to 2 percent slopes	13.80	18.0%		FAV	182	57	68	89	133
154A	Flanagan silt loam, 0 to 2 percent slopes	12.00	15.6%		FAV	194	63	77	102	144
**679B	Blackberry silt loam, 2 to 5 percent slopes	2.22	2.9%		FAV	**192	**59	**73	**102	**141
Weighted Average						192.8	61.4	72.9	97.2	141.7

Table: Optimum Crop Productivity Ratings for Illinois Soil by K.R. Olson and J.M. Lang, Office of Research, ACES, University of Illinois at Champaign-Urbana. Version: 1/2/2012 Amended Table S2 B811





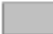
Crop yields and productivity indices for optimum management (B811) are maintained at the following NRES web site: <http://soilproductivity.nres.illinois.edu/>

^{**} Indexes adjusted for slope and erosion according to Bulletin 811 Table S3

^a UNF = unfavorable; FAV = favorable

^b Soils in the southern region were not rated for oats and are shown with a zero "0".

Soils data provided by USDA and NRCS. Soils data provided by University of Illinois at Champaign-Urbana.

	4" tile	39777.29 ft
	6" tile	1353.70 ft
	8" tile	1974.19 ft
	10" tile	3617.49 ft
	existing clay tile	1922.06 ft

80 ac
Pipe

